

GENERAL WARNING

Obstacles:

New sector north sector from 220808-221231. Cranes near sector. See page 2.

Disregard north flight path alignment guidance marking on heliport (white arrow). Flight-path alignment guidance lights on heliport is correct.

South within sector: Trees and buildings. **North within sector:** Trees.

North outside sector: Building north-east of helideck with Smoke stack and ventilation shaft.

Operational hours

AD OPS Hours H24, PPR 15 min

Airport information

Note. AIP ENR 5.1.2 Ambulance flights are permitted within ES R101 when operating to/from Norrtälje hospital.

ALTN: Norrtälje ESN 594358N 0184147E (*) 1,6 NM S, 40 ft. RWY 07/25 Fuel.

AIP 594358N 0184147E (*) 1,6 NM S, 40 ft. PCL on freq. 123.325 MHz 15 sec duration

Ambulance and rescue flights only

PPR 15 min H24 Rescue Coordination Center (SOS Alarm) PN H24 +46 8 454 23 62.

Heliport free/ready when lights are on or radio contact. See AIP for more info.

Helideck +46(0)8 123 2 62 75

Switchboard +46(0)176-10 100

Communication

Rakel 330-3421

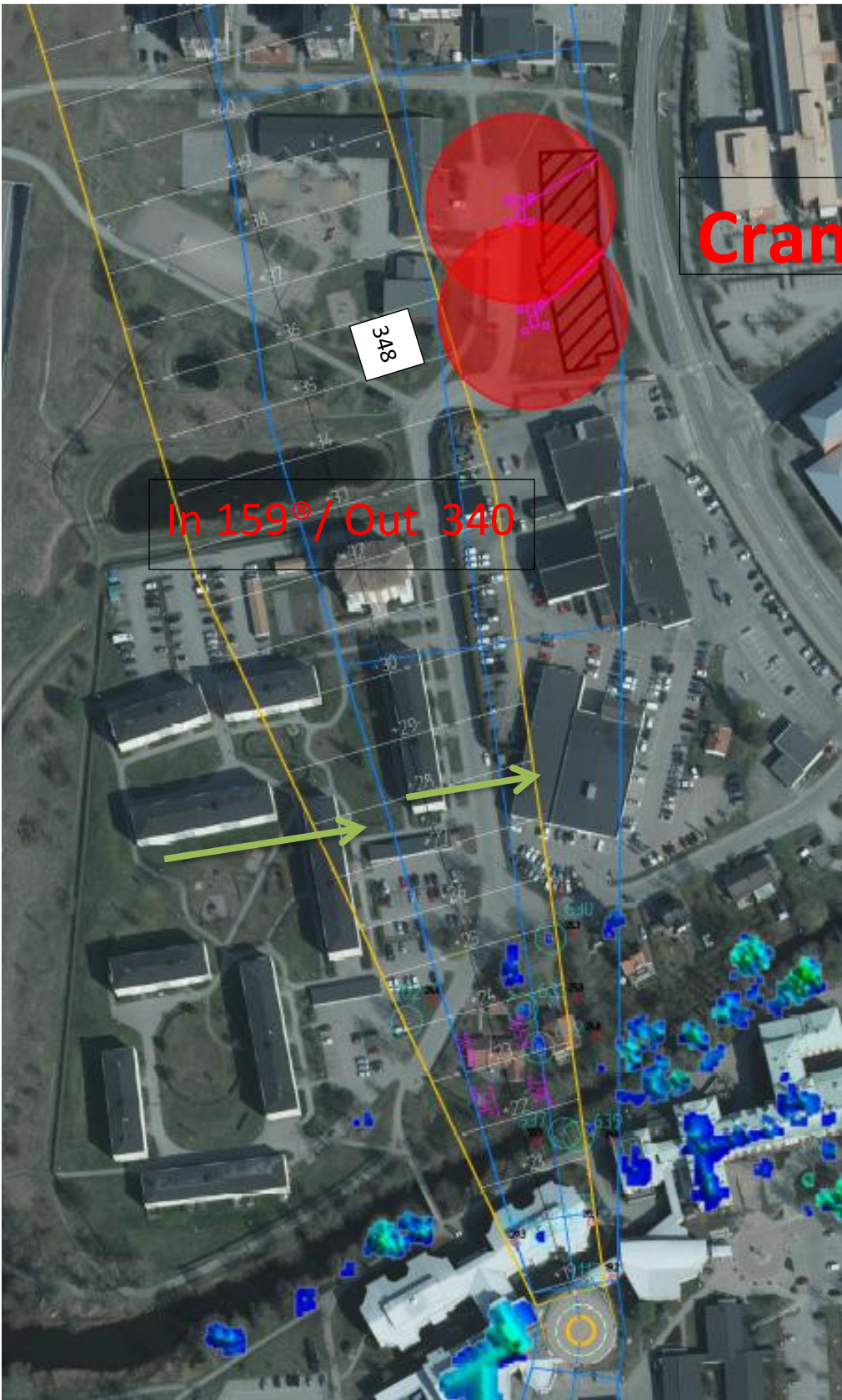
Heliport VHF equipped freq. 122,875 (on request via SOSAB)

Clearance

Uncontrolled airspace to 1500 ft. AGL.

Heliport information

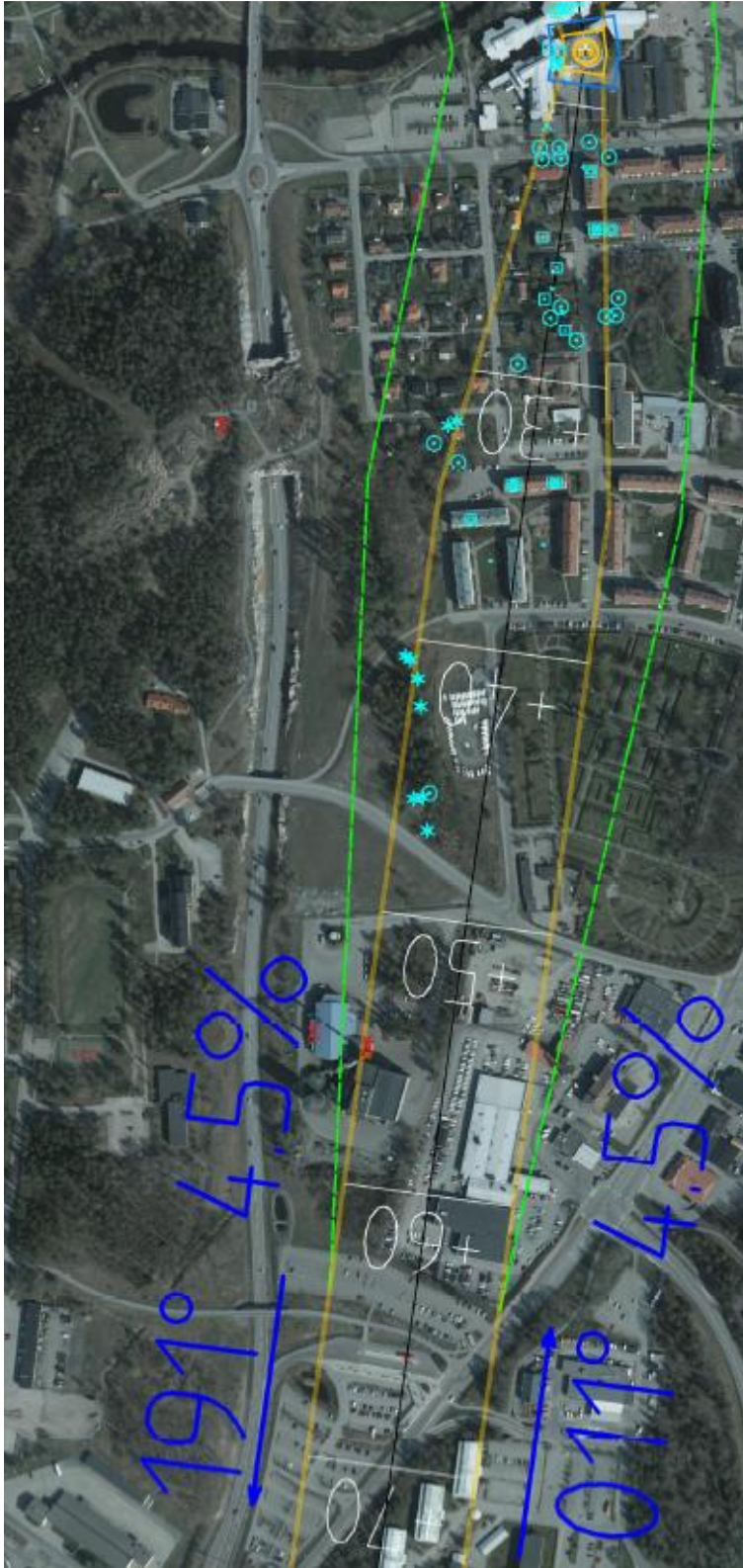
ESHY									
Elevated on third floor level	POS LAT 59 45,28N LONG 018 41,21 E								
Proportion/dimension for HKP AS 365 N3 D value max 13,68 m MLW 6 ton	AD ELEV 61 ft. FATO/TLOF Ø 19,80 m Surface Concrete								
	<table border="1"> <thead> <tr> <th colspan="2">SECTORS</th> </tr> <tr> <th>APPROACH</th> <th>DEPARTURE</th> </tr> </thead> <tbody> <tr> <td>SE (SOUTH) 4,5% 011° GEO/ 004° MAG</td> <td>4,5% 191° GEO/ 184°MAG</td> </tr> <tr> <td>SE (NORTH) 4,5% 167° GEO/ 159° MAG</td> <td>4,5% 347° GEO/ 340° MAG</td> </tr> </tbody> </table>	SECTORS		APPROACH	DEPARTURE	SE (SOUTH) 4,5% 011° GEO/ 004° MAG	4,5% 191° GEO/ 184°MAG	SE (NORTH) 4,5% 167° GEO/ 159° MAG	4,5% 347° GEO/ 340° MAG
SECTORS									
APPROACH	DEPARTURE								
SE (SOUTH) 4,5% 011° GEO/ 004° MAG	4,5% 191° GEO/ 184°MAG								
SE (NORTH) 4,5% 167° GEO/ 159° MAG	4,5% 347° GEO/ 340° MAG								
RFF Class H1 < 15 m, 2 hose spray lines (2 monitors) Fire Extinguisher 45 kg	Lights: Airport flash Perimeter light green 13 Floodlights 2 Lighted Windsock Flight-path alignment guidance lights on heliport								



Cranes

In 159° / Out 340

New Sector



South sector GEO 191/ 011. See page 1 for MAG.

