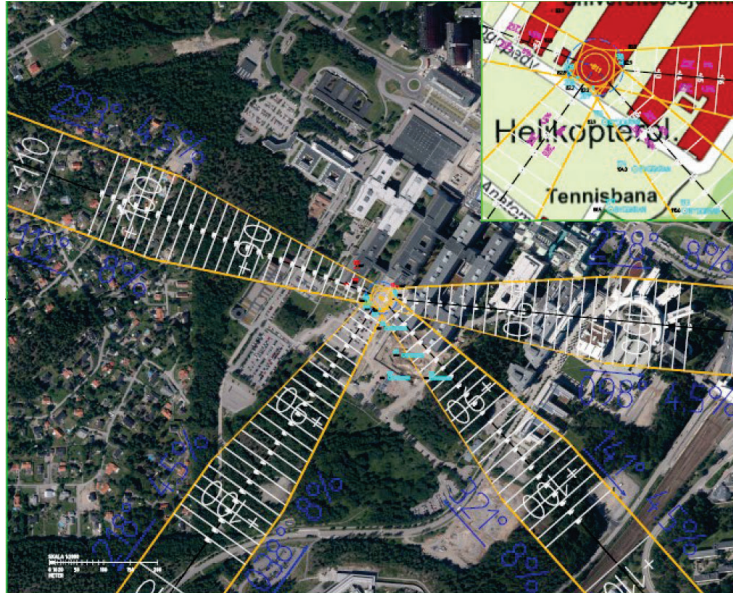


GENERAL Warning

ESHL Stockholm Karolinska Universitetssjukhuset Huddinge, do not mistake for Karolinska universitetssjukhuset Solna ESHK.

**Operational hours**

H24, PPR

Airport information

Ambulance and rescue flights only.

PPR 10 min PN on RAKEL or to RCC SOS Alarm +46 (0)8 454 26 22.

Heliport open when Heliport beacon is ON.

Hospital Security central +46(0)8 585 888 88 (#3).

ALTN: ESHK, ESHC and ESSB

Obstacles: See NOTAM and AIP Sup. for obstacles in sectors.

Director of operation: lennart.samuelsson@regionstockholm.se

+46(0)725460538 Mo-Fr 08:00-16:00. LT Outside office hrs, contact Hospital Security central.

Communication

Uncontrolled airspace.

AIP ESSB: "Outside ATS hours of operation intentions should be transmitted on frequency 118.105 when flying over Stockholm city".

ESHL com: RAKEL group 339-Hkp-KS. Rakel SOS Alarm 330-3501 /stand by 330-3510.

In the case of heavy traffic to and from ESHL and for non RAKEL equipped helicopters, use VHF 122.875 as backup if Bromma TWR 118.105 is blocked by radio traffic.

Report landing and takoff to SOS Alarm.

Clearance

Uncontrolled airspace. For IFR Clearance CTC Stockholm Control.

Elevated located on 10:th floor	POS LAT 59 13,11N LONG 017 56,03 E												
Dimensions: Max rotor diameter 16,3m. Bearing strength (Tonnes) 12t.	AD ELEV 264 ft. FATO/TLOF Ø 29,3m Surface Concrete												
	<table> <tr> <th colspan="2">SECTORS</th></tr> <tr> <th>APPROACH</th><th>DEPARTURE</th></tr> <tr> <td>W (West) 8% 113° M</td><td>4,5% 293° M</td></tr> <tr> <td>E (EAST) 8 % 278° M</td><td>4,5% 098° M</td></tr> <tr> <td>SE (SOUTH EAST) 8% 321° M</td><td>4,5% 141° M</td></tr> <tr> <td>SW (SOUTH WEST) 8% 038° M</td><td>4,5% 218° M</td></tr> </table>	SECTORS		APPROACH	DEPARTURE	W (West) 8% 113° M	4,5% 293° M	E (EAST) 8 % 278° M	4,5% 098° M	SE (SOUTH EAST) 8% 321° M	4,5% 141° M	SW (SOUTH WEST) 8% 038° M	4,5% 218° M
SECTORS													
APPROACH	DEPARTURE												
W (West) 8% 113° M	4,5% 293° M												
E (EAST) 8 % 278° M	4,5% 098° M												
SE (SOUTH EAST) 8% 321° M	4,5% 141° M												
SW (SOUTH WEST) 8% 038° M	4,5% 218° M												
RFF Class H2 < 24 m , 2 oscillating foam monitors One fire extinguisher, 45 kg	Lights: Airport flash (H••••) Perimeter lights green Floodlights 2 Windsock, lighted Direction lights in open sectors on heliport .												

TEMPO restriction due to WIP with hanging loads from 2025-05-21 to 2025-07-04. Overflying prohibited!
Sector E and SE CLOSED!

