

GENERAL WARNING

Obstacles: North of both sectors.

Operational hours

Ambulance and rescue flights only.

AD OPS Hours H24.

PPR 10 min to SOS Alarm and Södersjukhuset via RAKEL 339 Hkp-Sös
(International FISE-HEMS-2). Fallback on tel. +46 (0)8 454 26 22.

Airport information

Heliport open when heliport flash on main building is on. Switchboard SÖS +46(0)8 123 610 00.

Communication

Hospital: Rakel 339 Hkp-Sös (International FISE-HEMS-2). Switchboard SÖS
+46(0)8 123 610 00. Mail: heliport.sodersjukhuset@regionstockholm.se

Clearance

Bromma TWR 118.105 Mhz

Note: AIP ESSB: Outside ATS hours of operation intension should be transmitted on frequency
118.105 when flying over Stockholm and Stockholm city.

Heliport information

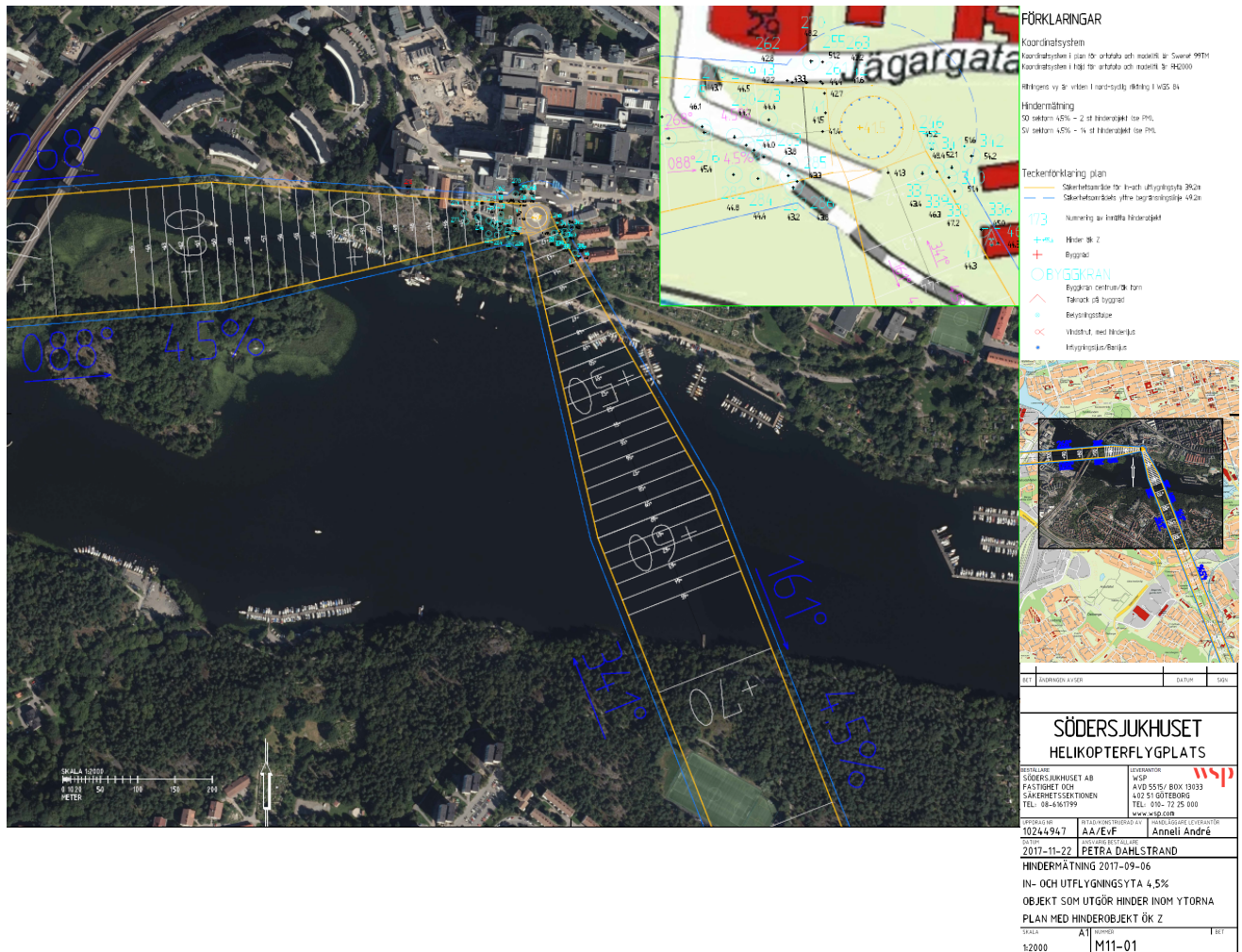
ESHC									
Surface level	ARP POS LAT 59 18,30N LONG 018 03,17 E								
Max RD 15,6 m D-value 18,7 T-value 10t. Alternate: ESSB, ESHK.	AD ELEV 136 ft. FATO/TLOF Ø 28,1 m Only one helicopter permitted on FATO/TLOF. Surface: concrete								
<table border="1"> <thead> <tr> <th colspan="2">SECTORS</th></tr> <tr> <th>APPROACH</th><th>DEPARTURE</th></tr> </thead> <tbody> <tr> <td>SE (SOUTH) 4,5% 341° TH</td><td>4,5% 161° TH</td></tr> <tr> <td>SE (WEST) 8% 088° TH</td><td>8% 268 °TH</td></tr> </tbody> </table>		SECTORS		APPROACH	DEPARTURE	SE (SOUTH) 4,5% 341° TH	4,5% 161° TH	SE (WEST) 8% 088° TH	8% 268 °TH
SECTORS									
APPROACH	DEPARTURE								
SE (SOUTH) 4,5% 341° TH	4,5% 161° TH								
SE (WEST) 8% 088° TH	8% 268 °TH								
RFF Class H2, 2 hose spray lines (2 monitors) Fire Extinguisher 45 kg	Lights: Airport flash on main building N FATO/TLOF Perimeter light, green 2 Floodlights 2 Lighted Windsocks, one on top of main building Two flight path alignment guidance markings with six lights each. Lightbox with text SÖDERSJUKHUSET on facade.								

Information

Helicopters arriving with patients are required to inform SOS Alarm if guidance to correct ward or medical assistance is necessary. Refuelling: JET A1 available to approved customers only. Contact heliport.sodersjukhuset@regionstockholm.se or +46(0)725460538 for info.

ESHC SÖDERSJUKHUSET STOCKHOLM

19 Jan 2026





Parking information

Warning! Only one helicopter allowed to operate on ESHC at any given time.

Caution! Lights up to 25cm above surface in vicinity of parking area (floodlight and TLOF-lights).

Helicopters with refueling permission may use parking positions for re-fuelling as depicted above, to reduce the distance for extending grounding cable and fuel hose. Parking alignment line (stop-line) closest to the tank is for helicopters up to D-value up to 13.63m (H145, EC145). Second line for helicopters up to D-value up to 14.65m (AW 169). Correct alignment will result in minimum 3m distance from rotor to obstacles.

Procedure: After landing in center of FATO/TLOF, hover taxi sideways to align with taxiline. Hover forward to position over stop-line, with line out to the side from pilot. Land. Before takeoff, bring helicopter to hover and move sideways to center of FATO/TLOF and perform normal takeoff.

-END-